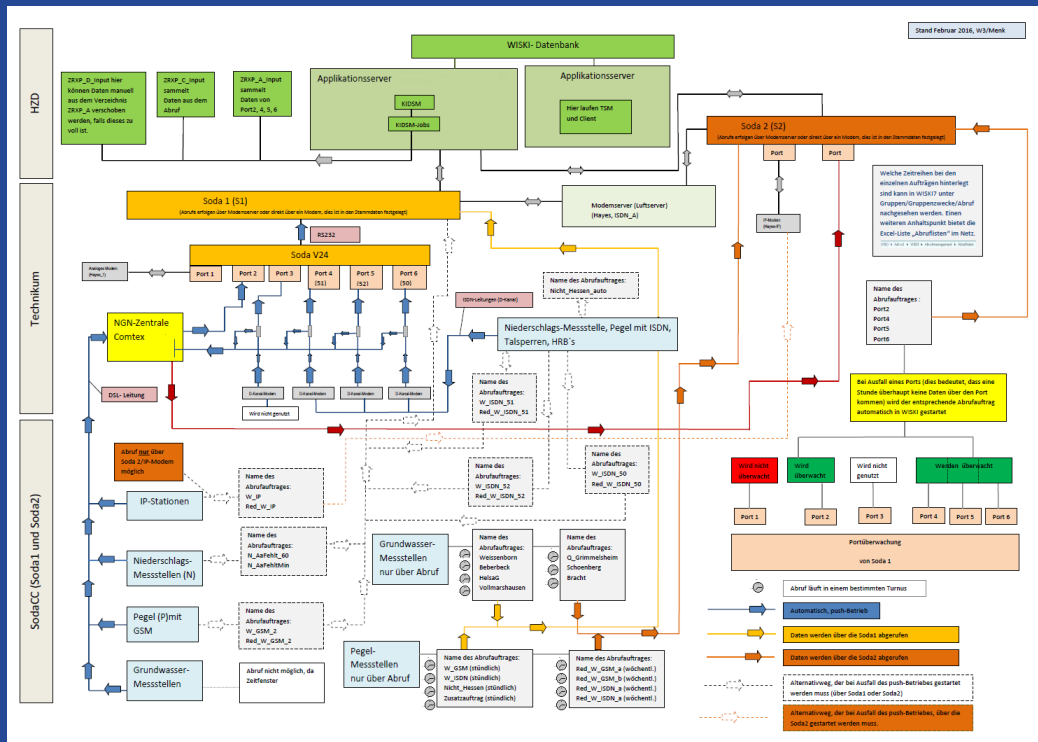


Operationelle Datenflüsse im automatisierten Betrieb der HVZ Hessen

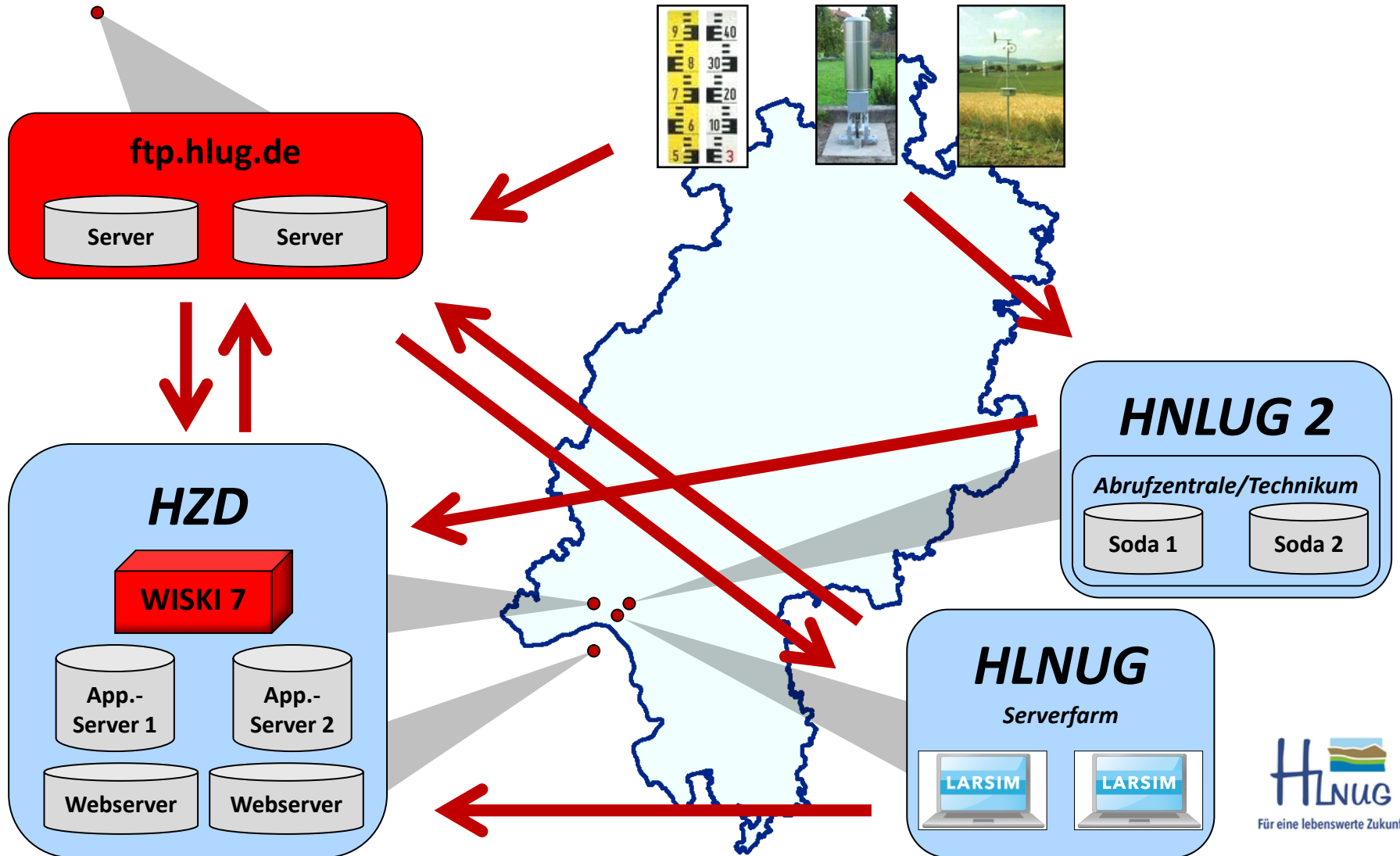


**Gerhard Brahmer,
Matthias Kremer**

Dezernat W3: Hydrologie, Hochwasserschutz

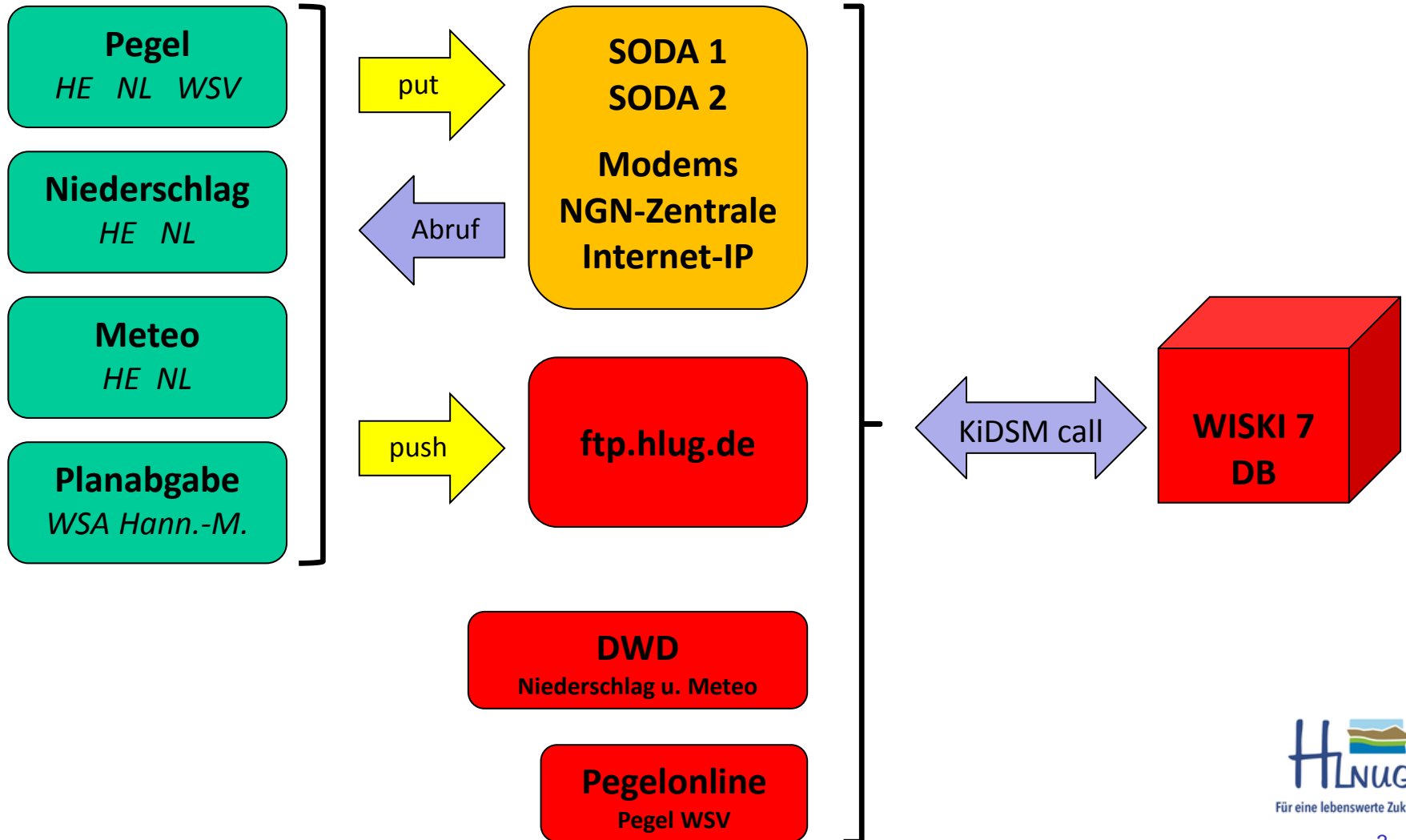


Standorte



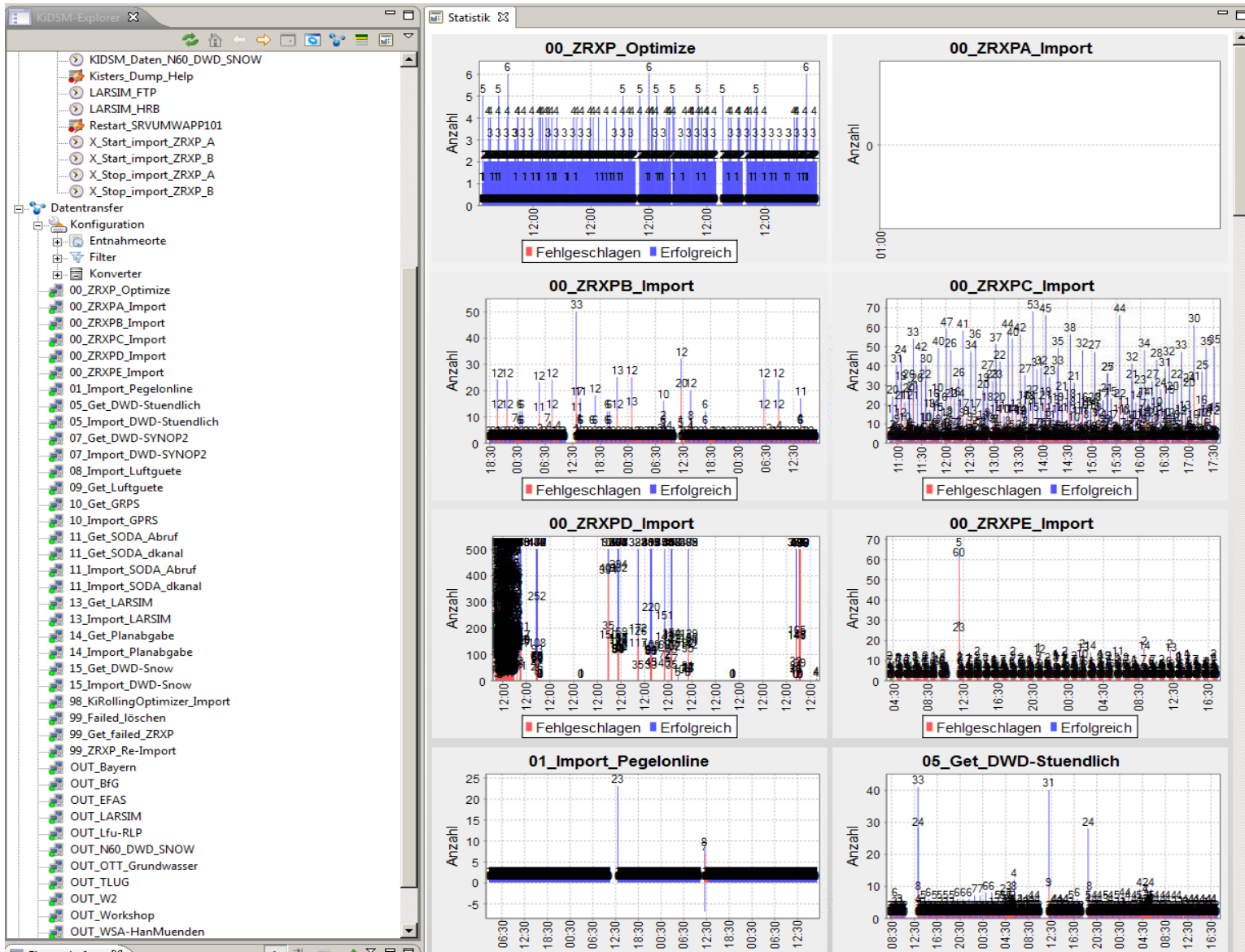


Eingangsdaten





Steuerung der Datentransfers KiDSM



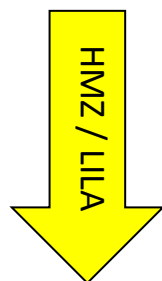
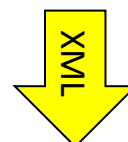
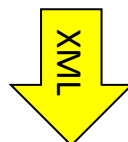
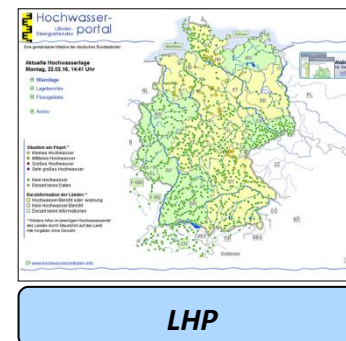
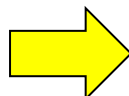
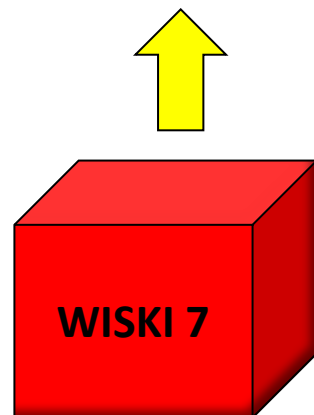
div.
Daten

ftp.server



Bereitstellung Messwerte

Nachbarländer, WSV usw.



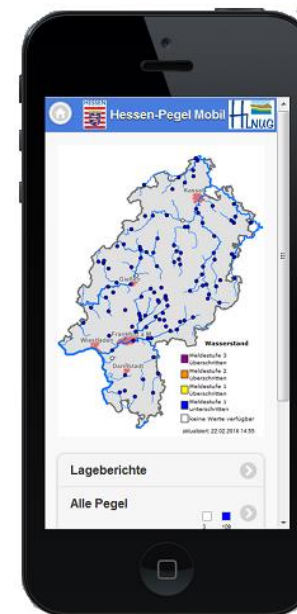
HW-Portal Hessen
www.hochwasser-hessen.de

180/01 hr-text Mo 22.02.16 14:45:57

FLÜSSE	Hessische Pegel	Tag	Zeit	cm	T	MS
Aar (Dill)						
Herbornseelbach	Mo 13:45	58	=	-		
Aar (Lahn)						
Michelbach	Mo 14:00	104	=	-		
Bracht						
Weilers	Mo 14:15	106	-	-		
Bieber						
Kassel	Mo 14:15	51	-	-		
Dammel	Mo 14:15	102	+	-		
Haueda	Mo 14:15	102	+	-		
Helmarshausen	Mo 14:15	246	-	-		
Dietzhölze						
Dillenburg2	Mo 14:15	69	+	-		
Dill						
Haiger	Mo 14:00	66	+	-		
Dillenburg1	Mo 14:00	52	+	-		

T=Tendenz, MS=Meldestufe Hinweis: 179
Quelle: HLNUG ohne Gewähr 1/10 >>
Siowetter Prüfsseite

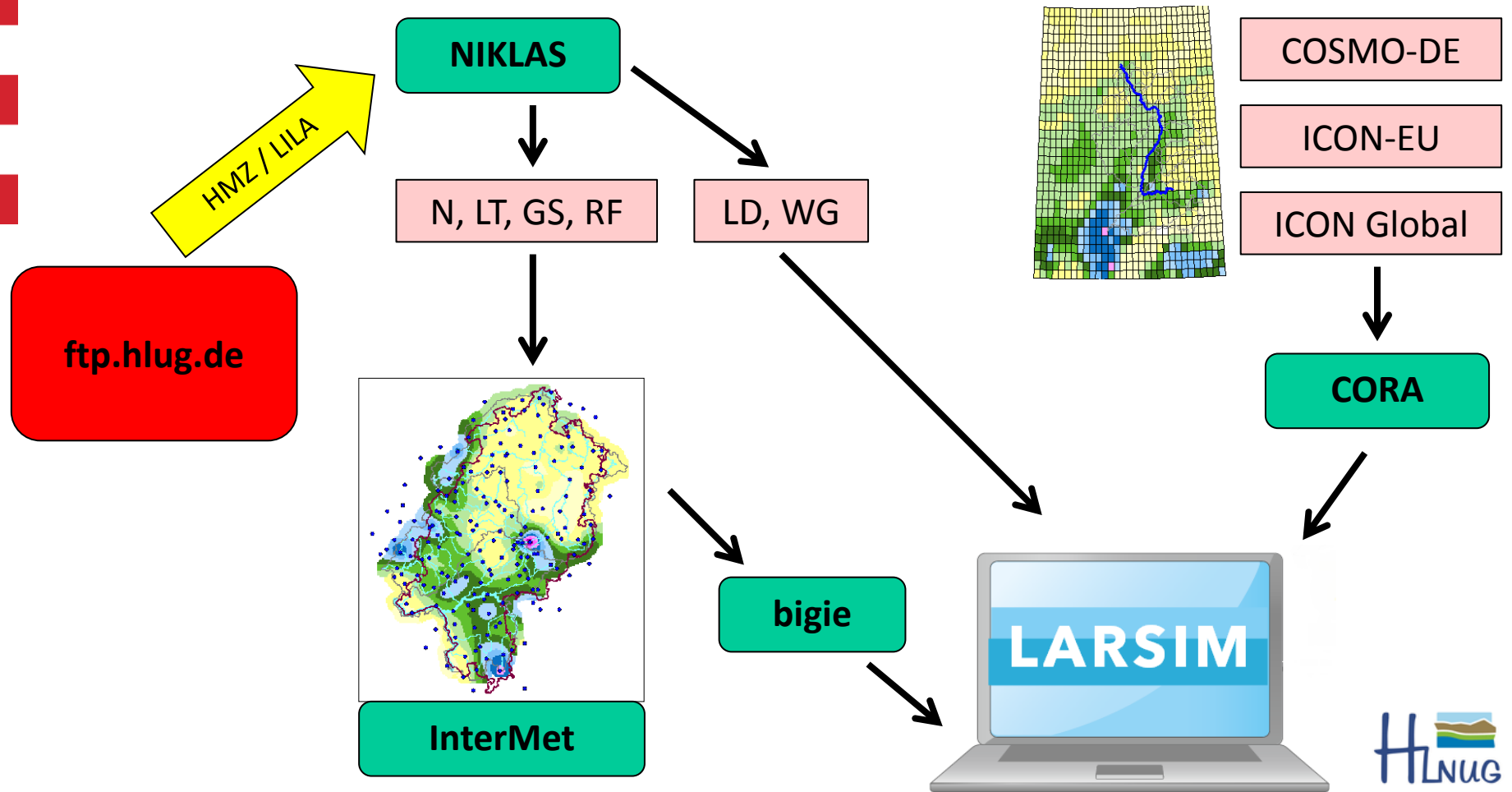
hr-Videotext



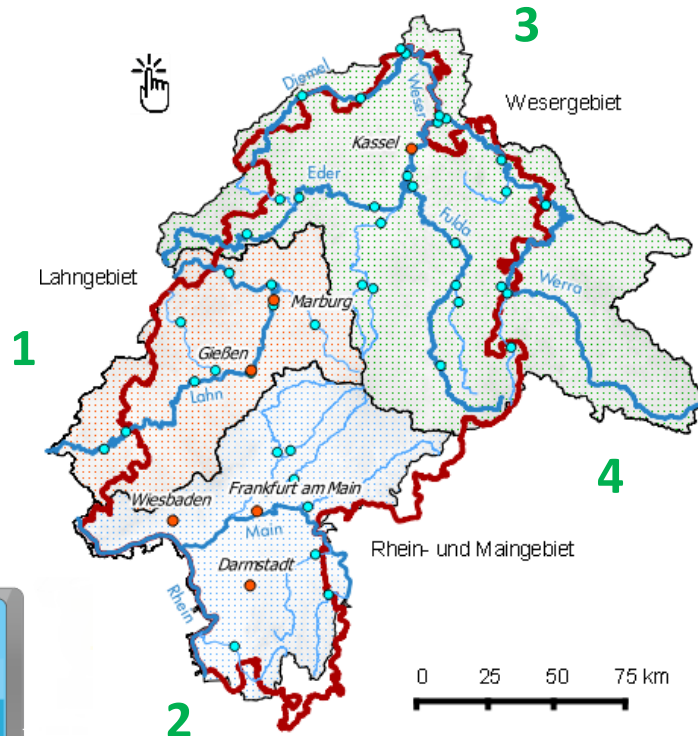
Mobile Web / App

m.hochwasser.hlug.de

LARSIM-Modellumgebung



LARSIM-Berechnungen



1. WHM LAHN
2. WHM Südhessen
3. WHM Nordhessen
4. WHM Werra (LARSIM-ME)

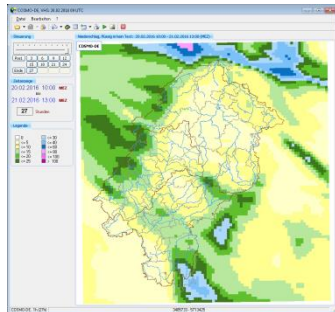
jeweils:

- a) run
- b) run_hq
- c) run_norain
- d) run_noopt

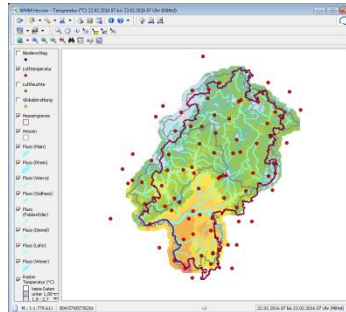




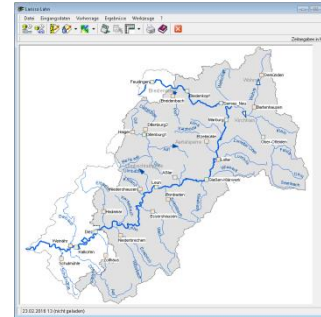
LARSIM-Tools



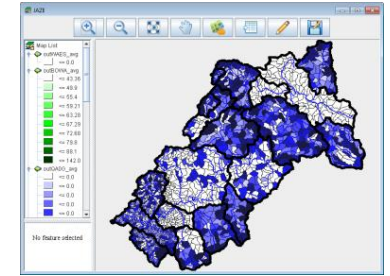
VLME



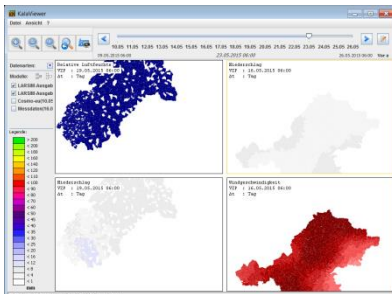
N-Map



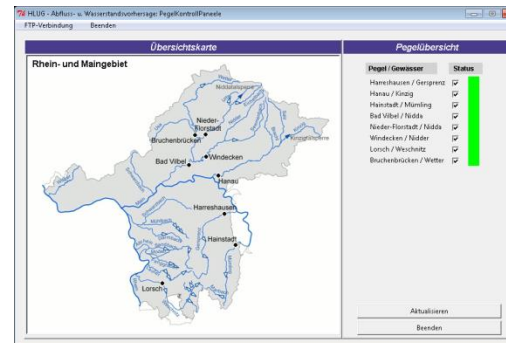
larisso



JAZE



KARL



Steuer -Paneele

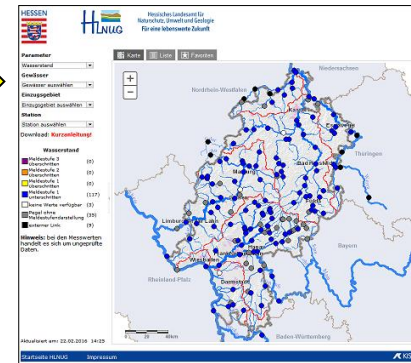


snow2whm

Bereitstellung LARSIM-Vorhersagen

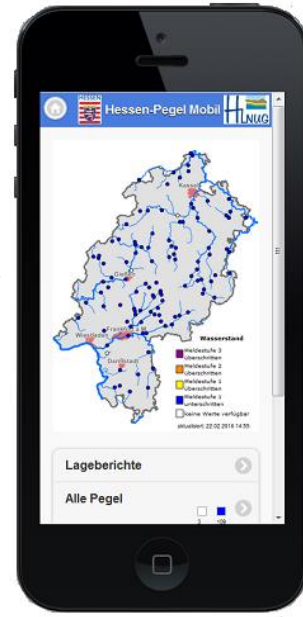


WISKI 7



WISKI Web 2

XML



Mobile Web / App

m.hochwasser.hlug.de

XML



HW-Portal Hessen

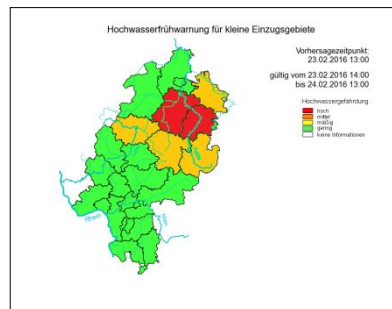
www.hochwasser-hessen.de

HMZ / LILA

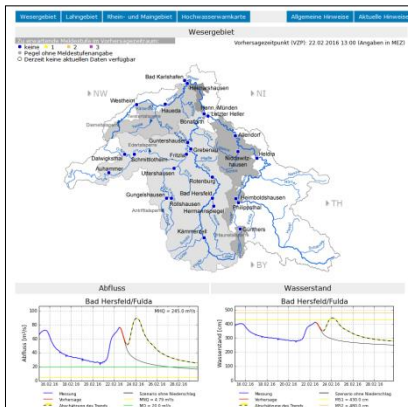
ftp.hlug.de
(bzw. extern)

Nachbarländer, WSV,
Verbände usw.

hochwasservorhersage.hlug.de



WARNSIM



Hydrograph

Vielen Dank für die Aufmerksamkeit!



Abrufzentrale des HLNUG in Wiesbaden